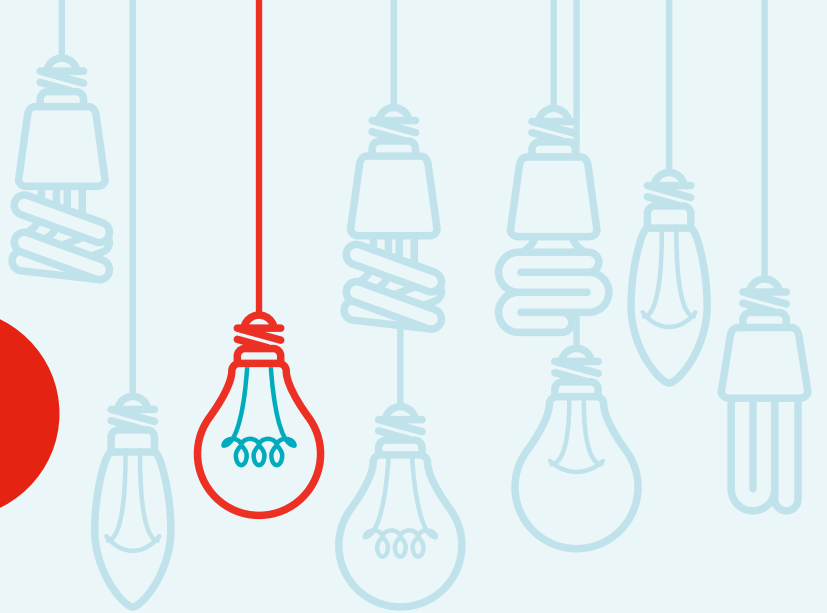


# Terms & Conditions



## When you have submitted your application

---

- 1 BSI will respond to applications within 10 working days
- 2 BSI may seek clarification about any aspect of your application before final approval
- 3 Applicants may be invited for interview before approval granted

## When your support has been approved

---

- 4 Successful applicants will be invited for a kick-off meeting at BSI's London office to discuss the project and support available
- 5 Applicants and BSI will agree a timetable of support before the project commences
- 6 Supported students may be asked to present their findings to BSI employees or standards committees
- 7 Supported students will contribute to the development of materials to promote their research output
- 8 You may be asked to sign a non-disclosure agreement

## General

---

- 9 BSI mentoring support is provided in addition to and not a replacement for academic supervision from a university tutor
- 10 BSI reserves the right to withdraw its support at any time if it does not consider the research practice undertaken or the research output produced to be of sufficient quality
- 11 Supported students are not entitled to any financial assistance from BSI